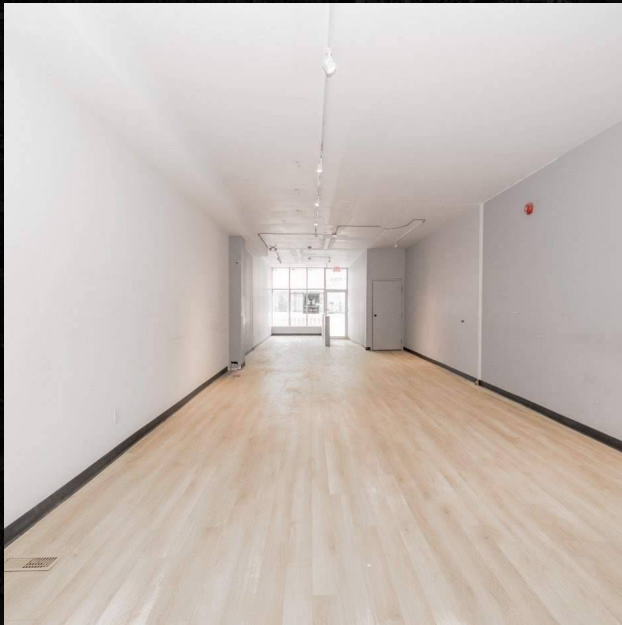


# PRIME QUEEN- WEST RETAIL STORE FRONT FOR LEASE

1289 QUEEN ST. W • 1,500 SQ. FT.



IN THE HEART OF EMERGING QUEEN WEST WEST • APPROXIMATELY 1,500 SQ. FT. OF PRIME RETAIL IN THE HEART OF PARKDALE • FULL HIGH & DRY BASEMENT • WILL SUIT A VARIETY OF RETAIL USES • IT IS READY TO GO! • LOCATED ON THE SOUTH SIDE OF QUEEN WEST AT BROCK • HIGH VEHICULAR & PEDESTRIAN TRAFFIC • LANDLORD WILL ASSIST WITH BUILD-OUT • POP UPS, SHORT TERM OR LONG TERM LEASE OPTIONS AVAILABLE

**THIS IS A MUST SEE!**

PLEASE DO NOT GO DIRECT, PLEASE DO NOT SPEAK TO STAFF, YOUR DISCRETION IS APPRECIATED. CONTACT THE LISTING AGENT FOR MORE INFO AND A COMPLETE OFFER PACKAGE.

## STEPHEN M. MURPHY

SALESPERSON / PRINCIPAL DIRECTOR

**C:** 416.707.6563 **O:** 416.849.5360 **F:** 416.849.8987

SMURPHY@OMGREALESTATE.COM // **OMGREALESTATE.COM**



CENTURY 21 REGAL REALTY INC. BROKERAGE

These statements are based upon information furnished by the principal and sources which we deem reliable - for which we assume no responsibility. This submission is made subject to prior sale, change in price or terms, or withdrawal without notice. Prospective purchasers or tenants should not construe this information as legal or tax advice. Legal counsel, accountants or other advisors should be consulted. (E.&O.E.). This document is not meant to solicit existing listings. (12.2002). Independently owned and operated. © TM, trademarks of Century 21 Real Estate, used under license.